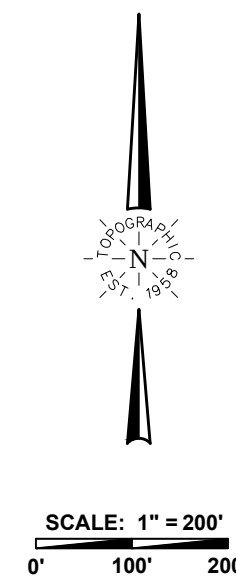


**NOTES**

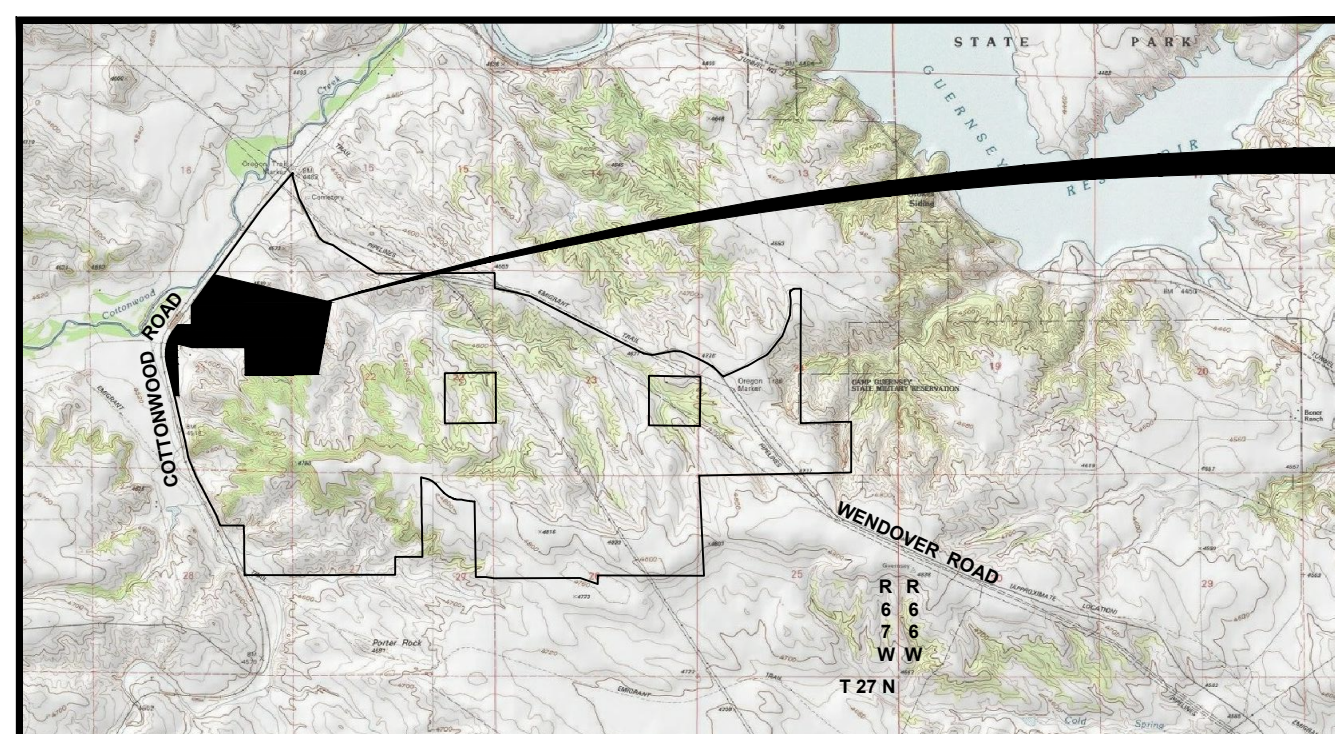
1. WATER SUPPLIED BY INDIVIDUAL DOMESTIC WELLS.
2. SEWER DISPOSAL BY INDIVIDUAL SEPTIC SYSTEMS.
3. DECLARATION OF COVENANTS ARE RECORDED BY SEPARATE DOCUMENT.
4. THE PROPOSED 30 FOOT EASEMENTS ALONG AND PARALLEL TO THE EASTERLY COUNTY ROAD EASEMENT LINE OF COTTONWOOD ROAD, AND OTHER PROPOSED UTILITY EASEMENTS AS SHOWN HEREON WILL BE RECORDED BY A SEPARATE DOCUMENT.
5. NOT PART OF A FIRE PROTECTION DISTRICT AND FIRE PROTECTION IS NOT OTHERWISE PROVIDED.
6. NO ATTEMPT WAS MADE TO DISCOVER AND SHOW ANY OTHER EASEMENTS, RESTRICTIONS, RIGHT-OF-WAYS, ZONING, SETBACKS, OR CONDITIONS AFFECTING THE PROPERTY OTHER THAN SHOWN HEREON, AND NO CERTIFICATION OR WARRANTIES ARE GIVEN, MADE, OR IMPLIED AS TO THE EXISTENCE OR NON-EXISTENCE OF SUCH ITEMS.
7. WHEN INDICATED THAT THE PROPERTY BOUNDARY IS THE CENTERLINE OF THE ROAD, BEARINGS AND DISTANCES ARE SHOWN TO SAID CENTERLINE.
8. PROPERTY CORNERS ARE SET ON THE INTERSECTIONS OF THE TRACT LINE AND THE COUNTY ROAD R.O.W. EASEMENT LINE AS SHOWN HEREON.
9. THE CENTERLINES OF ALL ROADS AS SHOWN HEREON IS THE EXISTING TRAVELED CENTERLINE, AS FOUND DURING THE FIELD SURVEY.



BASIS OF BEARINGS IS WYOMING STATE PLANE, EAST ZONE, NAD 1983.  
DISTANCES ARE GROUND, U.S. SURVEY FOOT  
(GROUND SCALE FACTOR = 1.0002877308)

**LEGEND**

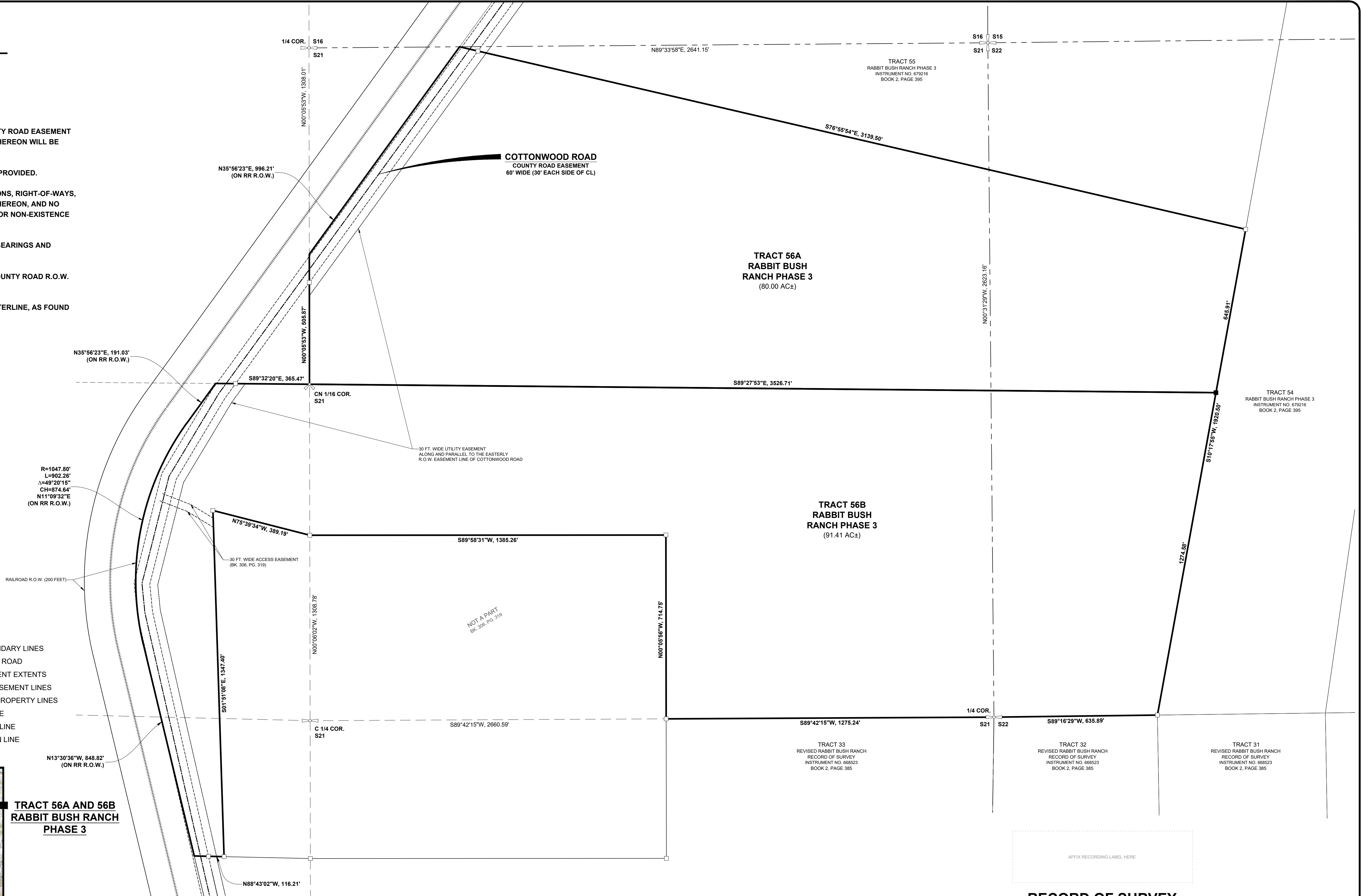
- ✚ - SECTION CORNER, SEE CORNER RECORDS
- ⊕ - 1/4 CORNER, SEE CORNER RECORDS
- ⊙ - 1/16 CORNER, SEE CORNER RECORDS
- ⬢ - FOUND ALUMINUM CAP
- - SET ALUMINUM CAP
- TRACT BOUNDARY LINES
- - - CENTERLINE ROAD
- · - ROAD EASMENT EXTENTS
- · - EXISTING EASEMENT LINES
- · - ADJOINING PROPERTY LINES
- - - SECTION LINE
- · - 1/4 SECTION LINE
- · - 1/16 SECTION LINE



VICINITY MAP  
PLATTE COUNTY, WYOMING

SCALE 1" = 5,000'

TRACT 56A AND 56B  
RABBIT BUSH RANCH  
PHASE 3

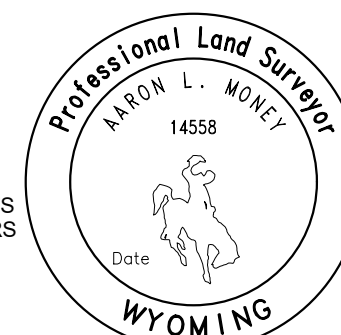


**RECORD OF SURVEY**  
FOR THE REARRANGEMENT OF TRACT 56 OF THE " RABBIT BUSH RANCH PHASE 3" RECORD OF SURVEY, AS FILED FOR RECORD ON MAY 29, 2020 AS INSTRUMENT NO. 679216, IN BOOK 2, PAGE 395, IN THE OFFICE OF THE CLERK RECORDER FOR PLATTE COUNTY, WYOMING AS  
**TRACTS 56A AND 56B**  
**RABBIT BUSH RANCH PHASE 3**  
SITUATED IN AND BEING A PORTION OF SECTION 21 AND THE NW1/4 OF SECTION 22, T27N, R67W OF THE 6th P.M., PLATTE COUNTY, WYOMING.

**CERTIFICATE OF SURVEYOR**

STATE OF WYOMING }  
COUNTY OF NATRONA } S.S.

I, AARON L. MONEY, BEING A DULY REGISTERED LAND SURVEYOR IN THE STATE OF WYOMING, DO HEREBY CERTIFY THAT THIS RECORD OF SURVEY REPRESENTS AN ACTUAL FIELD SURVEY MADE BY ME OR BY OTHERS UNDER MY DIRECT SUPERVISION, AND THAT IT CORRECTLY SHOWS THE PROPERTIES LOCATED ON THE GROUND.



340 W. B STREET, Ste. 204 • CASPER, WYOMING 82601  
TELEPHONE: (307) 439-4567  
WWW.TOPOGRAPHIC.COM

PREPARED FOR: PRONGHORN CONSTRUCTION LIMITED KEOGH  
P.O. BOX 2215  
CHEYENNE, WY 82003

PROJ. # 125893 • August 4, 2020 • DRAWN BY: KLC • CHECKED BY: ALM