

RECORD OF SURVEY

FOR WILLOW ACRES LYING IN LOT 4, THE NE1/4SW1/4 AND THE SE1/4SW1/4 OF SECTION 18 AND LOT 1, THE NE1/4SW1/4, THE W1/2SW1/4 AND THE W1/2SE1/4 OF SECTION 18, T.43N, R.90W, OF THE SIXTH PRINCIPAL MERIDIAN, WESTON COUNTY, WYOMING.

STATEMENT OF INTENT

THE ABOVE AND FOREGOING INTENT TO ESTABLISH WILLOW ACRES BY DIVIDING LOT 4, THE NE1/4SW1/4 AND THE SE1/4SW1/4 OF SECTION 18 AND LOT 1, THE NE1/4SW1/4, THE W1/2SW1/4 AND THE W1/2SE1/4 OF SECTION 18, T.43N, R.90W, OF THE SIXTH PRINCIPAL MERIDIAN, WESTON COUNTY, WYOMING INTO THE TRACTS SHOWN IN THE ABOVE MAP OF SURVEY, ALONG WITH A PRIVATE ACCESS EASEMENT, NO RIGHT ROAD, LYING IN LOT 4, AND THE SE1/4SW1/4 OF SECTION 18 AND NE1/4SW1/4, THE SW1/4SW1/4 AND THE NW1/4SE1/4 OF SECTION 18, T.43N, R.90W, OF THE SIXTH PRINCIPAL MERIDIAN, WESTON COUNTY, WYOMING, SAID PRIVATE ACCESS EASEMENT CENTERLINE BEING MORE PARTICULARLY DESCRIBED AS FOLLOWS:

BEGINNING AT A U.S.G.L.O. BRASS CAP MARKING THE SOUTHWEST CORNER OF SAID SECTION 18, WHICH BEARS N 89°50'30" E, 1312.89 FEET FROM A 3" 110" ALUMINUM CAP STAMPED LS 14275 MARKING THE WEST 1/4 CORNER BETWEEN SAID SECTION 18 AND 19, BEING THE BASIS OF BEARING FOR THIS DESCRIPTION;

THENCE N 97°40'00" W, 732.07 FEET TO THE WEST LINE OF SAID SECTION 18 TO A POINT OF INTERSECTION;

THENCE S 87°37'40" E, 60.00 FEET TO A POINT OF INTERSECTION;

THENCE S 89°42'20" E, 193.00 FEET TO A POINT OF INTERSECTION;

THENCE S 87°47'10" E, 193.00 FEET TO A POINT OF INTERSECTION;

THENCE N 87°57'14" E, 58.00 FEET TO A POINT OF INTERSECTION;

THENCE N 87°42'50" E, 155.00 FEET TO A POINT OF INTERSECTION;

THENCE S 79°20'40" E, 285.00 FEET TO A POINT OF INTERSECTION;

THENCE S 89°33'15" E, 33.33 FEET TO A POINT OF INTERSECTION;

THENCE S 89°33'15" E, 134.77 FEET TO A POINT OF INTERSECTION;

THENCE S 79°20'40" E, 157.28 FEET TO A POINT OF INTERSECTION;

THENCE S 79°20'40" E, 177.74 FEET TO A POINT OF INTERSECTION;

THENCE S 82°30'37" E, 155.00 FEET TO A POINT OF INTERSECTION;

THENCE S 87°38'54" E, 193.00 FEET TO A POINT OF INTERSECTION;

THENCE S 89°25'27" E, 275.00 FEET TO A POINT OF INTERSECTION;

THENCE S 89°25'27" E, 300.00 FEET TO A POINT OF INTERSECTION;

THENCE S 82°10'59" E, 430.00 FEET TO A POINT OF INTERSECTION;

THENCE S 89°14'54" E, 430.00 FEET TO A POINT OF INTERSECTION;

THENCE S 89°12'31" E, 320.00 FEET TO A POINT OF INTERSECTION;

THENCE S 79°20'40" E, 255.00 FEET TO A POINT OF INTERSECTION;

THENCE N 89°39'58" E, 213.00 FEET TO A POINT OF INTERSECTION;

THENCE N 89°39'58" E, 157.75 FEET TO A POINT ON A CURVE TO THE RIGHT;

THENCE ALONG SAID CURVE TO THE RIGHT 97.73 FEET (RADIUS OF 83.19, CHORD BEARS N 89°32'57" W, 94.88 FEET) TO A POINT OF INTERSECTION;

THENCE S 89°37'11" W, 2315.68 FEET TO A POINT OF INTERSECTION BEING THE CENTER OF A 75.00 FOOT RADIUS CIRCLE BEING THE END OF SAID PRIVATE ACCESS EASEMENT CENTERLINE.

SAID PRIVATE ACCESS EASEMENT BOUNDARY IS 80.00 FEET WIDE AND LIES 30.00 FEET ON BOTH SIDES OF THE PRIVATE ACCESS EASEMENT CENTERLINE AND ALSO ENCOMPASSES THE LIMITS OF SAID 75.00 FOOT RADIUS CIRCLE. THE PRIVATE ACCESS EASEMENT CENTERLINE IS 643.14 FEET LONG AND THE PRIVATE ACCESS EASEMENT BOUNDARY ENCOMPASSES 8.98 ACRES.

RECORD OF SURVEY OF WILLOW ACRES PREPARED FOR:

PRONGHORN CONSTRUCT L.T.D., KEOKH

NOTES

1. PRIVATE ROAD MAINTENANCE BY INDIVIDUAL TRACT OWNERS.
2. WATER SUPPLIED BY INDIVIDUAL DOMESTIC WELLS.
3. SEWER DISPOSAL BY INDIVIDUAL SEPTIC SYSTEMS.
4. ACCESS AND UTILITY EASEMENTS ARE DESCRIBED AND RECORDED BY A SEPARATE DOCUMENT.
5. DECLARATION OF COVENANTS ARE RECORDED BY SEPARATE DOCUMENT.
6. FIRE PROTECTION TO BE PROVIDED BY WESTON COUNTY FIRE DEPARTMENT, SUNDANCE STATION.

CERTIFICATE OF SURVEYS

STATE OF WYOMING }
COUNTY OF CROOK }

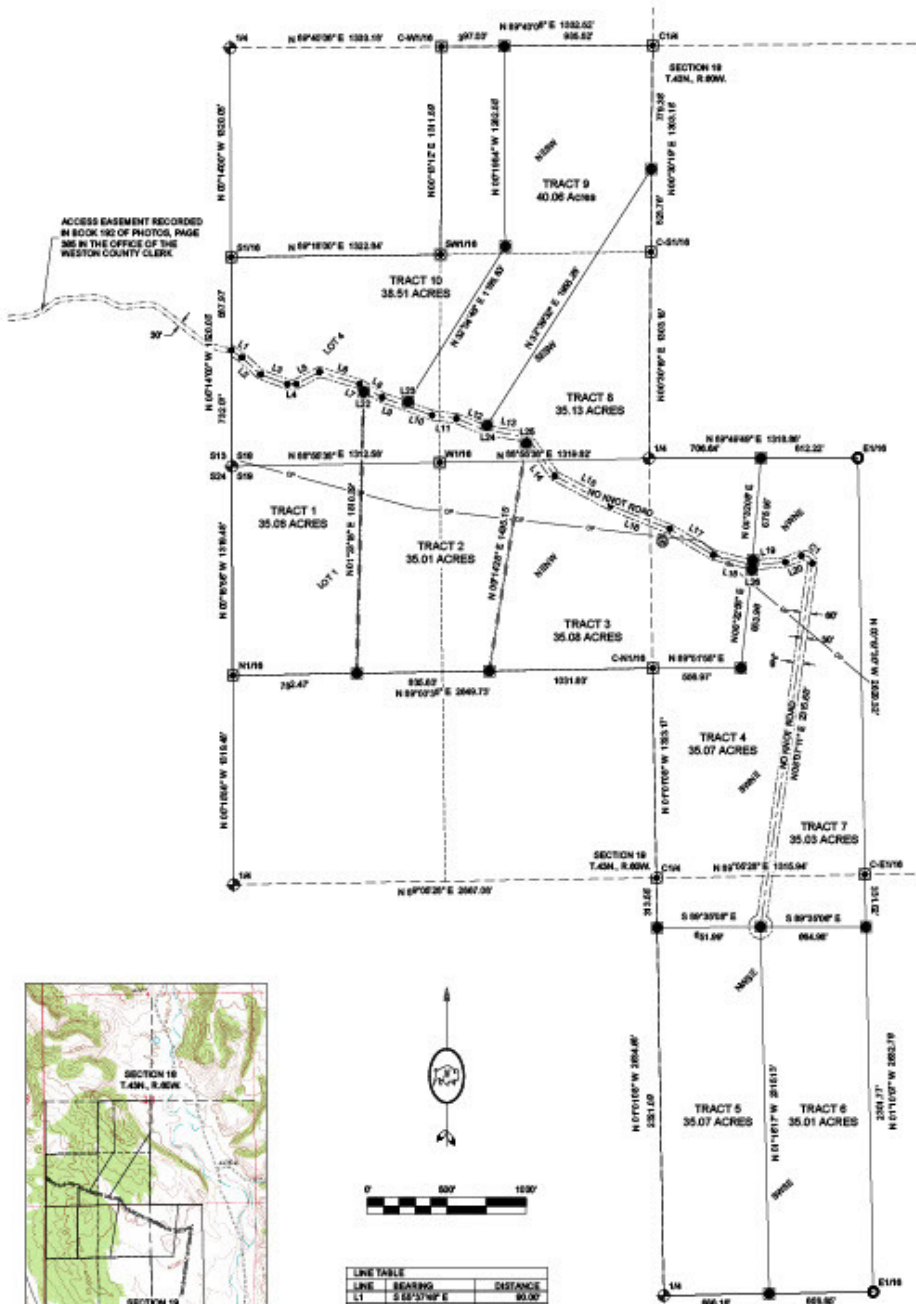
I, MATTHEW GOODSON, OF SUNDANCE, CROOK COUNTY, WYOMING, DO HEREBY CERTIFY THAT THIS MAP WAS DRAWN FROM NOTES TAKEN DURING AN ACTUAL SURVEY DONE BY ME AND UNDER MY DIRECT SUPERVISION OCTOBER & NOVEMBER 2020 AND THAT THIS SURVEY IS ACCURATELY REPRESENTED HEREON.

PREPARED BY
BEARLOGGE ENGINEERING & SURVEYING
P.O. BOX 136, 430 CLEVELAND STREET
SUNDANCE, WY 82728 (307) 283-2923

RECORD OF SURVEY

FOR WILLOW ACRES LYING IN LOT 4, THE NE1/4SW1/4 AND THE SE1/4SW1/4 OF SECTION 18 AND LOT 1, THE NE1/4SW1/4, THE W1/2SW1/4 AND THE W1/2SE1/4 OF SECTION 18, T.43N, R.90W, OF THE SIXTH PRINCIPAL MERIDIAN, WESTON COUNTY, WYOMING.

DRAWN BY	DATE	SCALE	DRAWER NO.
RAW	1/6/2022	1" = 80'	
REVISED BY	DATE	SHEET	MAP NO.
		1 OF 1	



LINE	BEARING	DISTANCE
L1	S 89°37'40" E	60.00
L2	S 89°42'20" E	193.00
L3	S 87°47'10" E	193.00
L4	N 87°57'14" E	58.00
L5	N 87°42'50" E	155.00
L6	S 79°20'40" E	285.00
L7	S 89°33'15" E	33.33
L8	S 89°33'15" E	134.77
L9	S 79°20'40" E	157.28
L10	S 79°20'40" E	177.74
L11	S 82°30'37" E	155.00
L12	S 87°38'54" E	193.00
L13	S 89°25'27" E	275.00
L14	S 89°25'27" E	300.00
L15	S 82°10'59" E	430.00
L16	S 89°14'54" E	430.00
L17	S 89°12'31" E	320.00
L18	S 79°20'40" E	255.00
L19	N 89°39'58" E	213.00
L20	N 89°39'58" E	157.75
L21	S 89°37'11" W	2315.68
L22	S 87°37'40" E	60.00
L23	S 89°42'20" E	193.00
L24	S 87°47'10" E	193.00
L25	N 87°57'14" E	58.00
L26	N 87°42'50" E	155.00
L27	S 79°20'40" E	285.00
L28	S 89°33'15" E	33.33

CURVE	ARC LENGTH	RADIUS	CHORD BEARING	CHORD LENGTH
C1	97.73	83.19	N 89°32'57" W	84.88

LEGEND

- U.S.G.L.O. BRASS CAP
- 1 1/2" ALUMINUM CAP STAMPED LS 945
- 2 1/2" ALUMINUM CAP STAMPED LS 14275
- 1 1/2" ALUMINUM CAP STAMPED LS 14275
- POINT OF INTERSECTION
- WATER WELL
- TRACT BOUNDARY
- EASEMENT CENTERLINE
- ACCESS EASEMENT BOUNDARY
- ELECTRICAL EASEMENT BOUNDARY
- OVERHEAD POWER
- SECTION LINE
- QUARTER SECTION LINE
- SIXTEENTH SECTION LINE