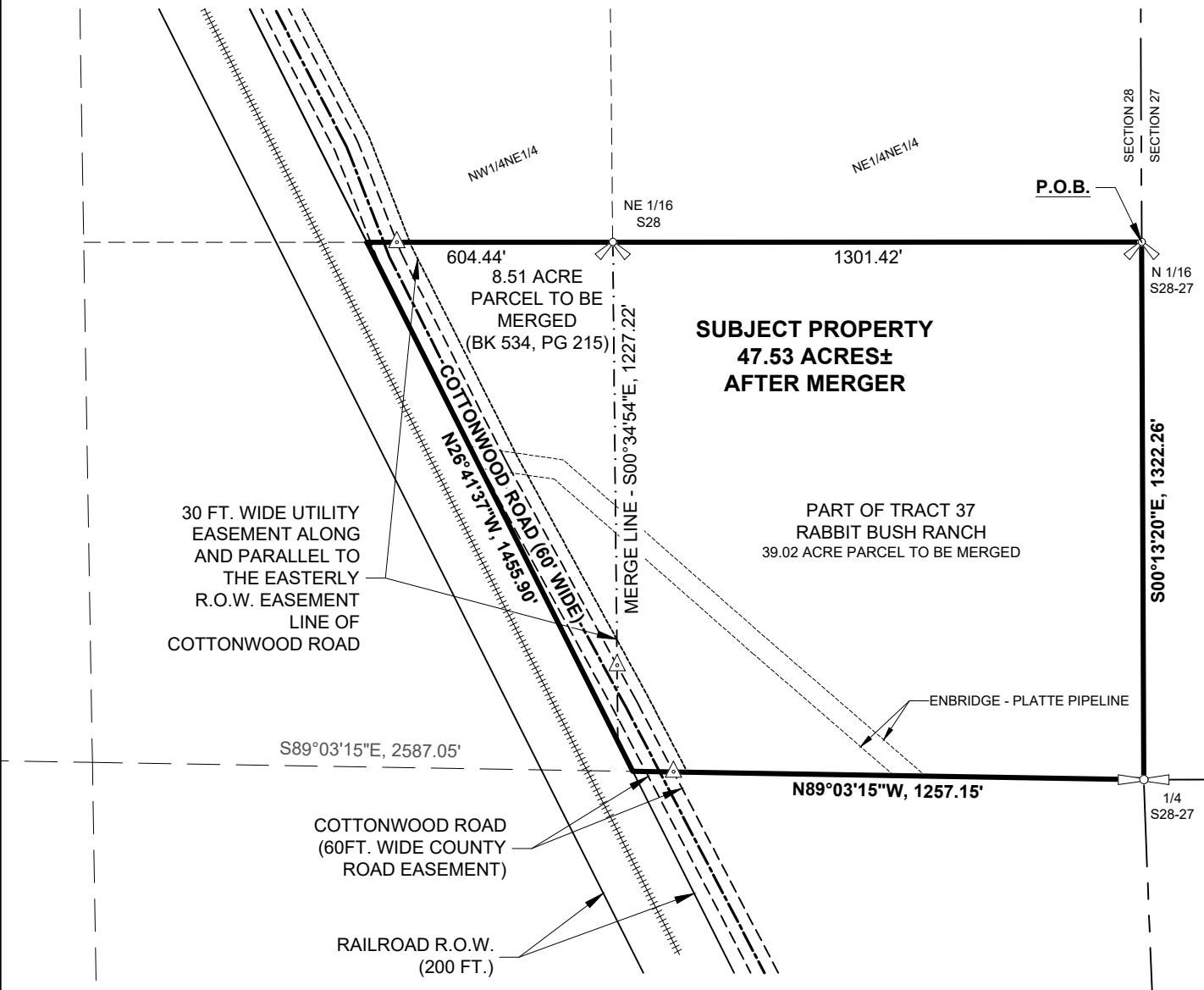


SURVEY MAP FOR MERGER OF ADJACENT PROPERTIES

BEING THAT PART OF THE SW1/4NE1/4 OF SECTION 28, T27N, R67W, LYING EAST OF THE RAILROAD RIGHT OF WAY AND A PORTION OF TRACT 37 OF THE "REVISED RABBIT BUSH RANCH" RECORD OF SURVEY, AS FILED FOR RECORD ON APRIL 25, 2019 AS INSTRUMENT NO. 668523, IN BOOK 2, PAGE 385, IN THE OFFICE OF THE CLERK RECORDER FOR PLATTE COUNTY, WYOMING.

AFFIX RECORDING LABEL HERE



SCALE: 1" = 400'

0' 200' 400'

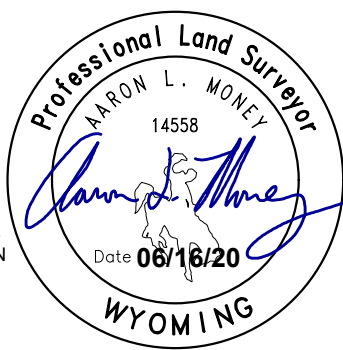
LEGEND

- | | | | |
|--|-----------------------------------|--|---|
| | - SUBJECT PROPERTY BOUNDARY LINES | | - SECTION CORNER, SEE CORNER RECORDS |
| | - RABBIT BUSH RANCH TRACT LINES | | - 1/4 CORNER, SEE CORNER RECORDS |
| | - ROAD EASEMENT EXTENTS | | - 1/16 CORNER, SEE CORNER RECORDS |
| | - UTILITY EASEMENT LINES | | - EXISTING ALUMINUM CAP, PLS 14558 RABBIT BUSH RANCH TRACT CORNER |
| | - CENTERLINE ROAD | | |
| | - SECTION LINE | | |
| | - 1/4 SECTION LINE | | |
| | - 1/16 SECTION LINE | | |

CERTIFICATE OF SURVEYOR

STATE OF WYOMING)
) s.s.
 COUNTY OF NATRONA)

I, **AARON L. MONEY**, DO HEREBY CERTIFY THAT I AM A REGISTERED PROFESSIONAL LAND SURVEYOR, LICENSED UNDER THE LAWS OF THE STATE OF WYOMING, AND THAT THIS EXHIBIT WAS PREPARED FROM AN ACTUAL SURVEY, AS SHOWN HEREON, PERFORMED BY ME DURING OR UNDER MY DIRECT SUPERVISION, AND THAT IT CORRECTLY REPRESENTS THE CONDITIONS AS THEY EXIST ON THE GROUND.



PREPARED FOR: PRONGHORN CONSTRUCTION LIMITED
 KEOGH
 P.O. BOX 2215
 CHEYENNE, WY 82003

TOPOGRAPHIC

LOYALTY INNOVATION LEGACY

340 W. B STREET, Ste. 204 • CASPER, WYOMING 82601
 TELEPHONE: (307) 439-4567
 WWW.TOPOGRAPHIC.COM

PROJECT # 136180 - JUNE 16, 2020 - DRAWN BY: KLC - REVIEWED BY: ALM