

RECORD OF SURVEY

FOR WILDWOOD ACRES LYING IN LOT 4, THE NE1/4SW1/4 AND THE SE1/4SW1/4 OF SECTION 18 AND LOT 1, THE NE1/4NW1/4, THE NW1/2NE1/4 AND THE W1/2SE1/4 OF SECTION 19, T.43N., R.60W. OF THE SIXTH PRINCIPAL MERIDIAN, WESTON COUNTY, WYOMING.

STATEMENT OF INTENT

THE ABOVE AND FOREGOING INTENT TO ESTABLISH WILDWOOD ACRES BY DIVIDING LOT 4, THE NE1/4SW1/4 AND THE SE1/4SW1/4 OF SECTION 18 AND LOT 1, THE NE1/4NW1/4, THE NW1/2NE1/4 AND THE W1/2SE1/4 OF SECTION 19, T.43N., R.60W. OF THE SIXTH PRINCIPAL MERIDIAN, WESTON COUNTY, WYOMING INTO THE TRACTS SHOWN IN THE ADJACENT MAP OF SURVEY, ALONG WITH A PRIVATE ACCESS AND UTILITY EASEMENT, WILDWOOD ROAD, LYING IN LOT 4, AND THE SE1/4SW1/4 OF SECTION 18 AND NE1/4NW1/4, THE NW1/2NE1/4, THE SW1/4NE1/4 AND THE NW1/4SE1/4 OF SECTION 19, T.43N., R.60W. OF THE SIXTH PRINCIPAL MERIDIAN, WESTON COUNTY, WYOMING, SAID PRIVATE ACCESS AND UTILITY EASEMENT CENTERLINE BEING MORE PARTICULARLY DESCRIBED AS FOLLOWS.

BEGINNING AT A U.S.G.L.O. BRASS CAP MARKING THE SOUTHWEST CORNER OF SAID SECTION 18, WHICH BEARS N 89°53'37" E, 1312.26 FEET FROM A 2 1/2" ALUMINUM CAP STAMPED LS 14275 MARKING THE WEST 1/16 CORNER BETWEEN SAID SECTION 18 AND 19, BEING THE BASIS OF BEARING FOR THIS DESCRIPTION.

THENCE N 00°14'00" W, 732.07 FEET ALONG THE WEST LINE OF SAID SECTION 18 TO A POINT OF INTERSECTION;

THENCE S 55°37'48" E, 80.00 FEET TO A POINT OF INTERSECTION;

THENCE S 48°02'05" E, 160.00 FEET TO A POINT OF INTERSECTION;

THENCE S 69°47'10" E, 180.00 FEET TO A POINT OF INTERSECTION;

THENCE N 87°57'14" E, 55.00 FEET TO A POINT OF INTERSECTION;

THENCE N 62°49'58" E, 165.00 FEET TO A POINT OF INTERSECTION;

THENCE S 73°20'48" E, 265.00 FEET TO A POINT OF INTERSECTION;

THENCE S 59°03'13" E, 30.23 FEET TO A POINT OF INTERSECTION;

THENCE S 59°03'13" E, 134.77 FEET TO A POINT OF INTERSECTION;

THENCE S 70°25'18" E, 157.26 FEET TO A POINT OF INTERSECTION;

THENCE S 70°25'18" E, 177.74 FEET TO A POINT OF INTERSECTION;

THENCE S 82°39'37" E, 155.00 FEET TO A POINT OF INTERSECTION;

THENCE S 67°36'34" E, 190.00 FEET TO A POINT OF INTERSECTION;

THENCE S 80°25'27" E, 275.00 FEET TO A POINT OF INTERSECTION;

THENCE S 35°25'47" E, 300.00 FEET TO A POINT OF INTERSECTION;

THENCE S 62°10'58" E, 400.00 FEET TO A POINT OF INTERSECTION;

THENCE S 68°14'04" E, 400.00 FEET TO A POINT OF INTERSECTION;

THENCE S 59°12'31" E, 320.00 FEET TO A POINT OF INTERSECTION;

THENCE S 75°35'18" E, 255.00 FEET TO A POINT OF INTERSECTION;

THENCE N 84°58'38" E, 210.00 FEET TO A POINT OF INTERSECTION;

THENCE N 68°08'58" E, 107.73 FEET TO A POINT ON A CURVE TO THE RIGHT;

THENCE ALONG SAID CURVE TO THE RIGHT 87.73 FEET (RADIUS OF 53.19, CHORD BEARS N 55°02'57" W, 84.58 FEET) TO A POINT OF INTERSECTION;

THENCE S 09°07'11" W, 2406.07 FEET TO A POINT OF INTERSECTION, BEING THE CENTER OF A 75.00 FOOT RADIUS CIRCLE BEING THE END OF SAID PRIVATE ACCESS AND UTILITY EASEMENT CENTERLINE.

SAID PRIVATE ACCESS AND UTILITY EASEMENT BOUNDARY IS 60.00 FEET WIDE AND LIES 30.00 FEET ON BOTH SIDES OF THE PRIVATE ACCESS AND UTILITY EASEMENT CENTERLINE AND ALSO ENCOMPASSES THE LIMITS OF SAID 75.00 FOOT RADIUS CIRCLE. THE PRIVATE ACCESS AND UTILITY EASEMENT CENTERLINE IS 1060.00 FEET LONG AND THE PRIVATE ACCESS AND UTILITY EASEMENT BOUNDARY ENCOMPASSES 1.77 ACRES.

RECORD OF SURVEY OF WILDWOOD ACRES PREPARED FOR: PRONGHORN CONSTRUCT L.T.D., KEOGH

NOTES

1. PRIVATE ROAD MAINTENANCE BY INDIVIDUAL TRACT OWNERS.
2. WATER SUPPLIED BY INDIVIDUAL DOMESTIC WELLS.
3. SEWER DISPOSAL BY INDIVIDUAL SEPTIC SYSTEMS.
4. ACCESS AND UTILITY EASEMENTS ARE DESCRIBED AND RECORDED BY A SEPARATE DOCUMENT.
5. DECLARATION OF COVENANTS ARE RECORDED BY SEPARATE DOCUMENT.
6. FIRE PROTECTION TO BE PROVIDED BY WESTON COUNTY FIRE DEPARTMENT, SUNDANCE STATION.

CERTIFICATE OF SURVEYOR

STATE OF WYOMING)
COUNTY OF CROOK)

I, MATTHEW GOODSON, OF SUNDANCE, CROOK COUNTY, WYOMING, DO HEREBY CERTIFY THAT THIS MAP WAS DRAWN FROM NOTES TAKEN DURING AN ACTUAL SURVEY DONE BY ME AND UNDER MY DIRECT SUPERVISION OCTOBER 8 & NOVEMBER 2020 AND THAT THIS SURVEY IS ACCURATELY REPRESENTED HEREON.

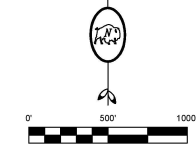
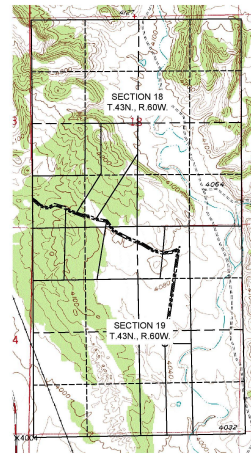
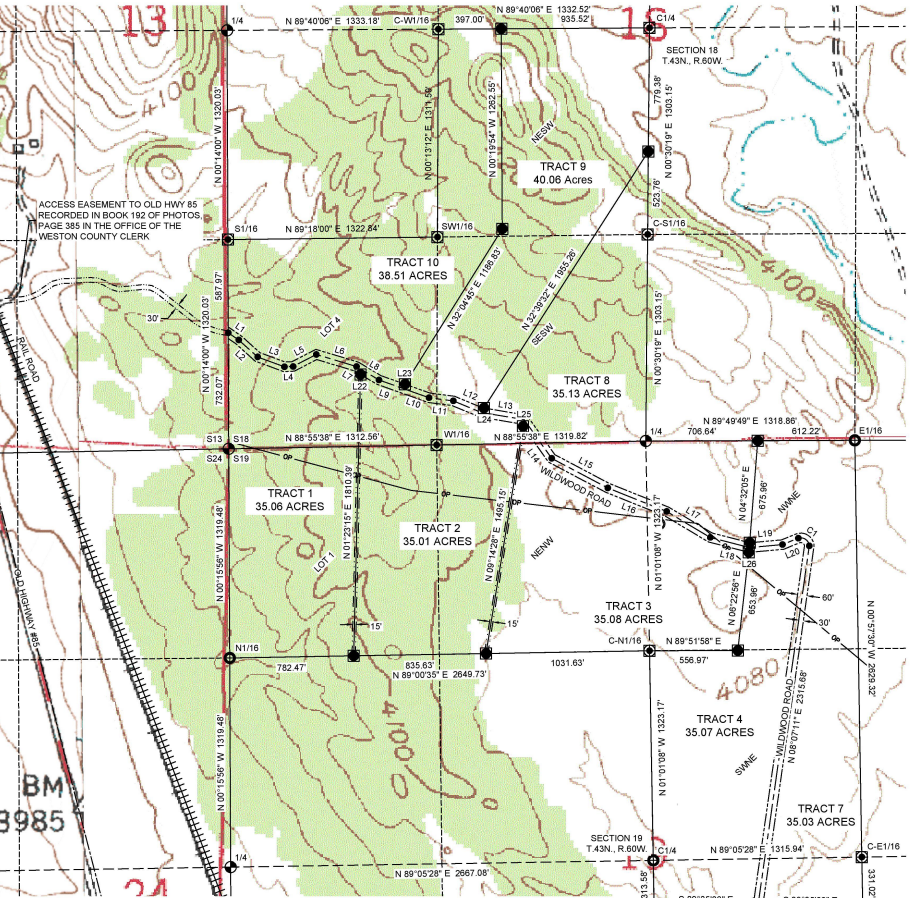


PREPARED BY:
BEARLOGE ENGINEERING & SURVEYING
P.O. BOX 130, 420 CLEVELAND STREET
SUNDANCE, WY 82729 (307) 383-3633

RECORD OF SURVEY

FOR WILDWOOD ACRES LYING IN LOT 4, THE NE1/4SW1/4 AND THE SE1/4SW1/4 OF SECTION 18 AND LOT 1, THE NE1/4NW1/4, THE NW1/2NE1/4 AND THE W1/2SE1/4 OF SECTION 19, T.43N., R.60W. OF THE SIXTH PRINCIPAL MERIDIAN, WESTON COUNTY, WYOMING.

DRAWN BY	DATE	SCALE	DRAWER NO.
R/JW	1/20/2022	1" = 500'	
REVISY BY	DATE	SHEET	MAP NO.
		1 OF 1	



LINE	BEARING	DISTANCE
L1	S 55°37'48" E	80.00'
L2	S 48°02'05" E	160.00'
L3	S 69°47'10" E	180.00'
L4	N 87°57'14" E	55.00'
L5	N 62°49'58" E	165.00'
L6	S 73°20'48" E	265.00'
L7	S 59°03'13" E	30.23'
L8	S 59°03'13" E	134.77'
L9	S 70°25'18" E	157.26'
L10	S 70°25'18" E	177.74'
L11	S 82°39'37" E	155.00'
L12	S 67°36'34" E	190.00'
L13	S 80°25'27" E	275.00'
L14	S 35°25'47" E	300.00'
L15	S 62°10'58" E	400.00'
L16	S 68°14'04" E	400.00'
L17	S 59°12'31" E	320.00'
L18	S 75°35'18" E	255.00'
L19	N 84°58'38" E	210.00'
L20	N 68°08'58" E	107.72'

WITNESS CORNER TABLE	BEARING	DISTANCE
W1	S 01°23'15" W	34.49'
W2	N 32°04'45" E	30.73'
W3	N 32°39'32" E	32.61'
W4	S 09°14'28" W	42.87'
W5	S 06°22'56" W	30.30'

LEGEND

- U.S.G.L.O. BRASS CAP
- 1 1/2" ALUMINUM CAP STAMPED LS 545
- 2 1/2" ALUMINUM CAP STAMPED LS 14275
- 1 1/2" ALUMINUM CAP STAMPED LS 14275
- POINT OF INTERSECTION
- TRACT BOUNDARY
- ACCESS AND UTILITY EASEMENT CENTERLINE
- ACCESS AND UTILITY EASEMENT BOUNDARY
- 15' ELECTRICAL EASEMENT
- SECTION LINE
- QUARTER SECTION LINE
- SIXTEENTH SECTION LINE

CURVE	ARC LENGTH	RADIUS	CHORD BEARING	CHORD LENGTH
C1	97.73	53.19	N 55°02'57" W	84.58'